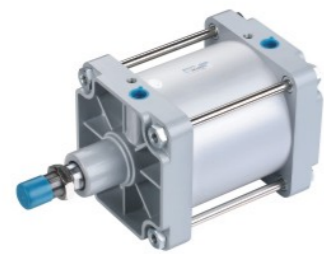


### DNC Series ISO15552 Standard Cylinder



DNC 200 x 100-S



DNC 250 x 200-S

Ordering Code

**DNC** × **160** × **100** - **25** - **S** - □

**Series Code**  
DNG:ISO15552 Standard Double Action Type  
DNGD:ISO15552 Standard Two Axis Double Action Type  
DNGJ:ISO15552 Two Axis Stroke Adjust Type

**Cylinder Bore**  
160mm-320mm

**Stroke**  
25:25mm  
50:50mm  
75:75mm

**Adjust Storke**

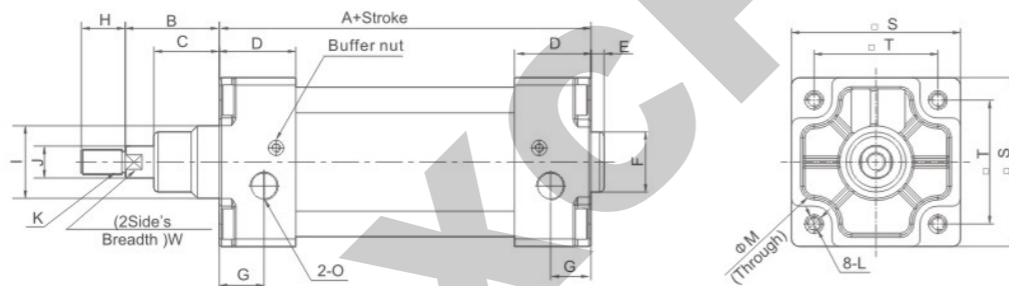
**Magnet Code**  
Blank:Without Magnet  
S:With Magnet

**Fixed Type**  
Blank:Normal type  
LB:Front and back fixed type  
FA:Front cover fixed type(Front flange type)  
FB:Back cover fixed type(Back flange type)  
CA:Back cover fixed type (Single earring)  
CB:Back cover fixed type(Double earring)

Specification

Bore(mm)	160	200	250	320
Motion Pattern	Double Action			
Working Medium	Air			
Fixed Type	Normal type FA type FB type CA type CB type LB type TC type			
Working Pressure Range	0.1~1.0MPa			
Ensured Pressure Resistance	1.5MPa			
Operating Temperature Range	-5~60℃			
Operating Speed Range	50~500mm/s			
Buffer Type	Adjustable Buffer			
Port Size	G3/4"		G1"	
Lubrication	Not required (Use Turbine oil/ISO Vg32 when necessary)			

Overall Dimensions



Dimension Sheet

Bore/Symbol	A	B	C	D	E	F	G	H	I	J	K	L	M	S	T	O
160	180	80	60	50	6	φ65	25	72	φ65	40	M36 × 2	M16	φ25 φ30	180	140	G3/4"
200	180	95	70	50	6	φ75	25	72	φ75	40	M36 × 2	M16	φ25 φ30	220	175	G3/4"
250	200	105	67	52	10	90	31	84	90	50	M42 × 2	M20	φ30	270	220	G1"
320	218	120	82	52	10	110	31	96	110	63	M48 × 2	M24	φ34	340	270	G1"

### SI Series ISO6431 Standard Cylinder



SI 50 x 100



SIJ 50 x 100-25

Ordering Code

**SI** × **50** × **50** - **25** - **S** - □

**Series Code**  
SI:ISO6431 Standard Double Action Type  
SID:ISO6431 Standard Two Axis Double Action Type  
SIJ:ISO6431 Two Axis Stroke Adjust Type

**Cylinder Bore**  
32mm-200mm

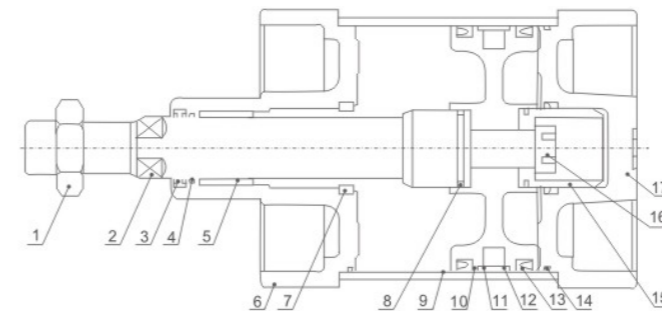
**Stroke**  
25:25mm  
50:50mm  
75:75mm

**Adjust Storke**

**Magnet Code**  
Blank:Without Magnet  
S:With Magnet

**Fixed Type**  
Blank:Normal type  
LB:Front and back fixed type  
FA:Front cover fixed type(Front Flange Type)  
FB:Back cover fixed type(Back Flange Type)  
CA:Back cover fixed type (Single Earring)  
CB:Back cover fixed type(Double Earring)  
TC:Central trunnion type  
TC-M:Central trunnion type attaching foot seat

Internal structure



NO	Designation	NO	Designation
1	Piston Rod Nut	10	Piston
2	Piston rod	11	Wearing
3	Front cover seal ring	12	Magnet(Optional)
4	O-Ring	13	Piston O-Ring
5	Bearing	14	Pipe wall O-Ring
6	Front cover	15	Damping
7	Buffering O-Ring	16	Hex socket screw
8	Piston rod O-Ring	17	Back cover
9	Barrel		

Specification

Bore(mm)	32	40	50	63	80	100	125	160	200
Motion Pattern	Double Action								
Working Medium	Air								
Fixed Type	Normal type FA type FB type CA type CB type LB type TC type								
Working Pressure Range	0.1~0.9MPa								
Ensured Pressure Resistance	1.35MPa								
Operating Temperature Range	-5~70℃								
Operating Speed Range	50~800mm/s								
Buffer Type	Adjustable Buffer								
Buffer Stroke					24		32		
Port Size	G1/8"		G1/4"		G3/8"		G1/2"		G3/4"

### SI Series ISO6431 Standard Cylinder

Cylinder theory output

Cylinder inside Diameter	External Diameter of Piston Rod	Motion Pattern	Compression Area(cm <sup>2</sup> )	Air Pressure(kg/cm <sup>2</sup> )								
				1	2	3	4	5	6	7	8	9
32	12	Double Action Press Side	8.04	8.04	16.08	24.12	32.16	40.20	48.24	56.28	64.32	72.36
		Pull Side	6.90	6.90	13.80	20.07	27.60	34.50	41.40	48.30	55.20	62.10
40	16	Double Action Press Side	12.56	12.56	25.12	37.68	50.24	62.80	75.36	87.92	100.24	113.04
		Pull Side	10.55	10.55	21.10	31.65	42.20	52.75	63.30	73.85	84.40	94.95
50	20	Double Action Press Side	19.63	19.63	39.26	58.89	78.52	98.15	117.78	137.41	157.04	176.67
		Pull Side	16.49	16.49	32.98	49.47	65.96	82.45	98.94	115.43	131.92	148.41
63	20	Double Action Press Side	31.17	31.17	62.34	93.51	124.68	155.85	187.02	218.19	249.36	280.53
		Pull Side	28.03	28.03	56.06	84.09	112.12	140.15	168.18	196.21	224.24	252.27
80	25	Double Action Press Side	50.26	50.26	100.52	150.78	201.04	251.30	301.56	351.82	402.08	452.34
		Pull Side	45.36	45.36	90.72	136.08	181.44	226.80	272.16	317.52	362.88	408.24
100	25	Double Action Press Side	78.53	78.53	157.06	235.59	314.12	392.65	471.18	549.71	628.24	706.77
		Pull Side	71.47	71.47	142.94	214.41	285.88	357.35	428.82	500.29	571.76	643.23
125	32	Double Action Press Side	122.72	122.72	245.44	368.16	490.88	613.60	736.32	859.04	981.76	1104.48
		Pull Side	114.68	114.68	229.36	344.04	458.72	573.40	688.08	802.76	917.44	1032.12
160	40	Double Action Press Side	201.06	201.06	402.12	603.18	804.24	1005.30	1206.36	1407.42	1608.48	1809.54
		Pull Side	188.49	188.49	376.98	565.47	753.96	942.45	1130.94	1319.43	1507.92	1696.41
200	40	Double Action Press Side	314.16	314.16	628.32	942.48	1256.64	1570.80	1884.96	2199.12	2513.28	2827.44
		Pull Side	301.57	301.57	603.14	904.71	1206.28	1507.80	1809.42	2100.99	2412.56	2714.13

Stroke

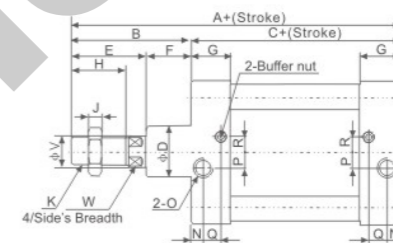
Bore(mm)	Standard Stroke	Max.Stroke	Permissible Stroke
32	25 50 75 80 100 125 160 175 200 250 300 350 400 450 500	1000	2000
40	25 50 75 80 100 125 160 175 200 250 300 350 400 450 500 600 700 800	1200	2000
50	25 50 75 80 100 125 160 175 200 250 300 350 400 450 500 600 700 800 900 1000	1200	2000
63	25 50 75 80 100 125 160 175 200 250 300 350 400 450 500 600 700 800 900 1000	1500	2000
80	25 50 75 80 100 125 160 175 200 250 300 350 400 450 500 600 700 800 900 1000	1500	2000
100	25 50 75 80 100 125 160 175 200 250 300 350 400 450 500 600 700 800 900 1000	1500	2000
125	25 50 75 80 100 125 160 175 200 250 300 350 400 450 500 600 700 800 900 1000	1500	2000
160	25 50 75 80 100 125 160 175 200 250 300 350 400 450 500 600 700 800 900 1000	1500	2000
200	25 50 75 80 100 125 160 175 200 250 300 350 400 450 500 600 700 800 900 1000	1500	2000

■ If you need special stroke, please Tell us, we can make according your require.

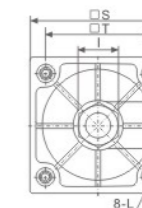
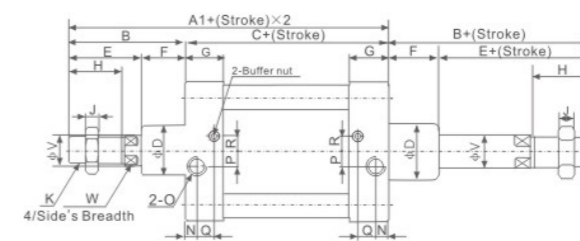
### SI Series ISO6431 Standard Cylinder

Overall Dimensions

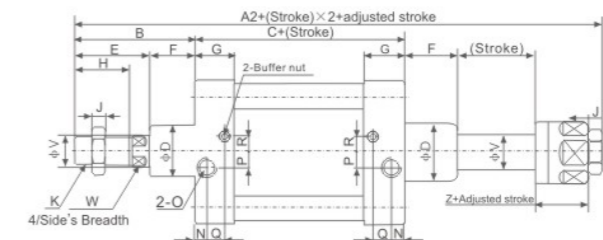
SI



SID



SIJ



Dimension Sheet

Bore/Symbol	A	A1	A2	B	C	D	E	F	G	H	I	J	K	L
32	142	190	185	48	94	30	32	16	27.5	22	17	6	M10 × 1.25	M6
40	159	213	205	54	105	35	36	18	29	24	19	7	M12 × 1.25	M6
50	175	244	231	70	105	40	45	25	30	32	24	8	M16 × 1.5	M8
63	190	259	245	70	120	45	46	24	31	32	24	8	M16 × 1.5	M8
80	214	300	283	86	128	45	56	30	35	40	30	10	M20 × 1.5	M10
100	227	316	298	89	138	55	57	32	36	40	30	10	M20 × 1.5	M10
125	278	396	368	118	160	60	73	45	46	54	41	10	M27 × 2	M12
160	332	484	448	152	180	65	94	58	50	72	55	18	M36 × 2	M16
200	337	494	452	157	180	75	100	51	51	72	55	18	M36 × 2	M16

Bore/Symbol	N	O	P	Q	R	S	T	V	W	Z
32	13.5	G1/8"	4	7.5	7	47	32.5	12	10	21
40	16	G1/4"	6	8.5	9	53	38	16	13	21
50	15.5	G1/4"	8.5	7.5	7.5	65	46.5	20	17	23
63	16.5	G3/8"	7.5	8.5	9	75	56.5	20	17	23
80	16.5	G3/8"	11	8.5	13.5	95	72	25	22	29
100	18.5	G1/2"	13.5	9.5	14.5	115	89	25	22	29
125	23	G1/2"	14	12	14	140	110	32	28	35
160	25	G3/4"	15	12	20	180	140	40	36	40
200	25	G3/4"	15	12	20	220	175	40	36	40