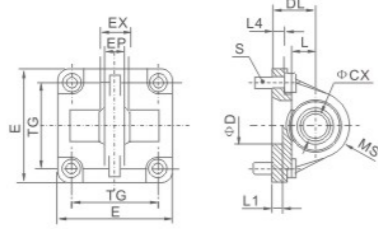
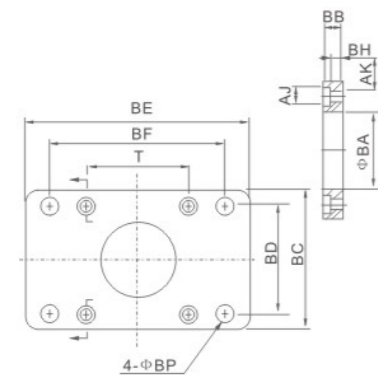


ISO Standard Cylinder Accessories

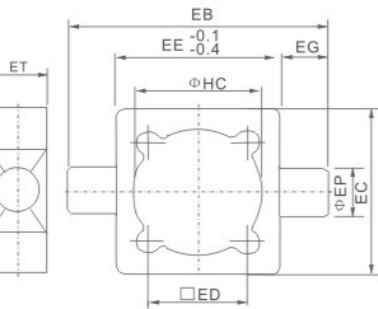


| Symbol/Bore | 32 | 40 | 50 | 63 | 80 | 100 |
|-------------|-------|-------|-------|-------|--------|--------|
| TG | 32.5 | 38 | 46.5 | 56.5 | 72 | 89 |
| φCX | 10 | 12 | 16 | 16 | 20 | 20 |
| DL | 22 | 25 | 27 | 32 | 36 | 41 |
| L | 12 | 15 | 15 | 20 | 20 | 25 |
| EX | 14 | 16 | 21 | 21 | 25 | 25 |
| EP | 10.5 | 12 | 15 | 15 | 18 | 18 |
| S | M6×20 | M6×20 | M8×20 | M8×20 | M10×25 | M10×25 |
| L4 | 5.5 | 5.5 | 6.5 | 6.5 | 10 | 10 |
| D | 30 | 35 | 40 | 45 | 45 | 55 |
| L1 | 7 | 7 | 7 | 7 | 9 | 9 |
| E | 45 | 52 | 65 | 75 | 95 | 115 |
| MS | 16 | 18 | 21 | 23 | 28 | 30 |



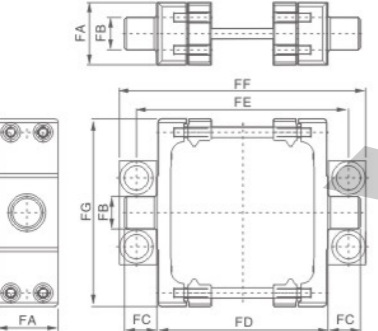
| Symbol/Bore | 32 | 40 | 50 | 63 | 80 | 100 | 125 | 160 | 200 |
|-------------|------|------|------|------|------|------|------|------|------|
| AJ | 11 | 11 | 14 | 14 | 17 | 17 | 19 | 25 | 25 |
| AK | 7 | 7 | 9 | 9 | 11 | 11 | 13 | 17 | 17 |
| BA | 30.5 | 35.5 | 40.5 | 45.5 | 45.5 | 55.5 | 60.5 | 65.5 | 75.5 |
| BB | 10 | 10 | 12 | 12 | 16 | 16 | 20 | 20 | 25 |
| BC | 47 | 53 | 65 | 75 | 95 | 115 | 140 | 180 | 220 |
| BD | 32 | 36 | 45 | 50 | 63 | 75 | 90 | 115 | 135 |
| BE | 80 | 90 | 110 | 125 | 154 | 186 | 224 | 280 | 320 |
| BF | 64 | 72 | 90 | 100 | 126 | 150 | 180 | 230 | 270 |
| BH | 4 | 4 | 4 | 6 | 6 | 6 | 8 | 8 | 12 |
| BP | 7 | 9 | 9 | 9 | 12.5 | 14.5 | 16.5 | 18.5 | 24 |
| T | 32.5 | 38 | 46.5 | 56.5 | 72 | 89 | 110 | 140 | 175 |

ISO-FA/FB Type Flange



| Symbol/Bore | 32 | 40 | 50 | 63 | 80 | 100 |
|-------------|------|-----|------|------|-----|-------|
| EB | 100 | 113 | 125 | 140 | 160 | 182 |
| EC | 53 | 63 | 75 | 90 | 105 | 128 |
| ED | 32.5 | 38 | 46.5 | 56.5 | 72 | 89 |
| EE | 52 | 63 | 75 | 90 | 110 | 128 |
| EG | 25 | 25 | 25 | 25 | 25 | 25 |
| EP | 12 | 16 | 16 | 20 | 20 | 25 |
| ET | 20 | 22 | 22 | 28 | 28 | 34 |
| HC | 37 | 45 | 55 | 68 | 87 | 107.5 |

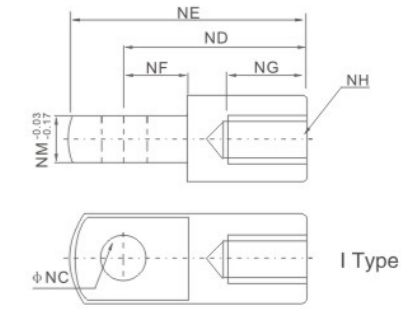
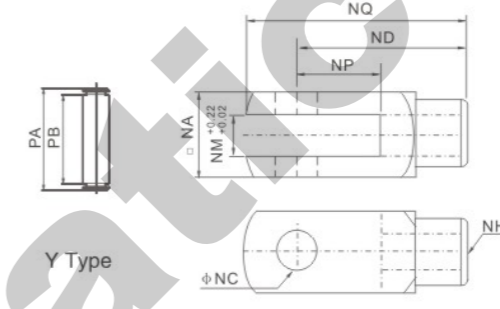
ISO-SI-TC



| Symbol/Bore | 32 | 40 | 50 | 63 | 80 | 100 | 125 |
|-------------|----|-----|-----|-----|-----|-----|-----|
| FA | 30 | 32 | 34 | 41 | 44 | 48 | 50 |
| FB | 12 | 16 | 16 | 20 | 20 | 25 | 25 |
| FC | 12 | 16 | 16 | 20 | 20 | 25 | 25 |
| FD | 50 | 63 | 75 | 90 | 110 | 132 | 160 |
| FE | 71 | 87 | 99 | 116 | 136 | 164 | 192 |
| FF | 86 | 105 | 117 | 136 | 156 | 189 | 217 |
| FG | 65 | 75 | 95 | 105 | 130 | 145 | 175 |

ISO-DNC-TC

ISO Standard Cylinder Accessories

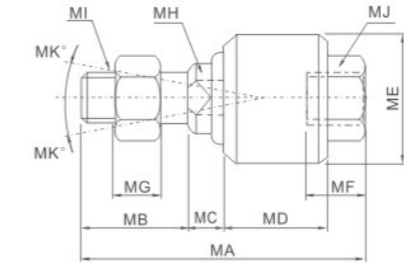


ISO-Y+Pin ISO-Y+Clip

| Symbol/Bore | 32 | 40 | 50 | 63 | 80 | 100 | 125 | 160 | 200 |
|-------------|----------|----------|---------|---------|---------|---------|---------|---------|---------|
| NA | 19 | 25.4 | 32 | 32 | 44.4 | 44.4 | 55 | 70 | 70 |
| NC | 10 | 12 | 16 | 16 | 20 | 20 | 30 | 35 | 35 |
| ND | 40 | 48 | 64 | 64 | 80 | 80 | 110 | 144 | 144 |
| NE | 52 | 67 | 89 | 89 | 112 | 112 | 155 | 201 | 201 |
| NF | 15 | 24 | 32 | 32 | 40 | 40 | 50 | 50 | 55 |
| NG | 20 | 20 | 23 | 23 | 30 | 30 | 56 | 72 | 72 |
| NH | M10×1.25 | M12×1.25 | M16×1.5 | M16×1.5 | M20×1.5 | M20×1.5 | M27×2.0 | M36×2.0 | M36×2.0 |
| NM | 10 | 12 | 16 | 16 | 20 | 20 | 30 | 35 | 35 |
| NP | 20 | 24 | 32 | 32 | 40 | 40 | 54 | 72 | 72 |
| NQ | 52 | 62 | 83 | 83 | 105 | 105 | 148 | 191 | 191 |
| PA | 26.2 | 32.8 | 39.3 | 39.3 | 53.3 | 53.3 | 64 | 80 | 80 |
| PB | 20 | 26.5 | 33 | 33 | 45 | 45 | 55.6 | 70.6 | 70.6 |

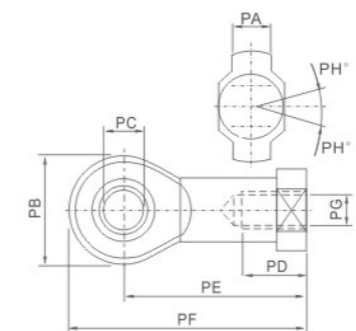


ISO-I Joint



ISO-UJ Type Float Joint

| Symbol/Bore | MA | MB | MC | MD | ME | MF | MG | MH | MI | MK |
|-------------|-----|----|----|----|------|------|------|----|----------|----|
| 32 | 58 | 22 | 7 | 21 | 26 | 11.5 | 7 | 10 | M10×1.25 | 12 |
| 40 | 58 | 22 | 8 | 21 | 28 | 11.5 | 8 | 12 | M12×1.25 | 12 |
| 50 | 90 | 27 | 10 | 41 | 44.5 | 20 | 10 | 17 | M16×1.5 | 7 |
| 63 | 90 | 27 | 10 | 41 | 44.5 | 20 | 10 | 17 | M16×1.5 | 7 |
| 80 | 102 | 29 | 13 | 46 | 53 | 24 | 13 | 22 | M20×1.5 | 10 |
| 100 | 102 | 29 | 13 | 46 | 53 | 24 | 13 | 22 | M20×1.5 | 10 |
| 125 | 147 | 54 | 13 | 64 | 62 | 39 | 14 | 30 | M27×2.0 | 9 |
| 160 | 147 | 43 | 23 | 58 | 88 | 35 | 13.5 | 36 | M36×2.0 | 15 |
| 200 | 147 | 43 | 23 | 58 | 88 | 35 | 13.5 | 36 | M36×2.0 | 15 |



ISO-PHS Type Fish Eye Joint

| Symbol/Bore | PA | PB | PC | PD | PE | PF | PG | PH |
|-------------|----|----|----|----|-----|-----|----------|----|
| 32 | 11 | 26 | 10 | 21 | 43 | 56 | M10×1.25 | 13 |
| 40 | 12 | 30 | 12 | 24 | 50 | 65 | M12×1.25 | 13 |
| 50 | 15 | 38 | 16 | 33 | 64 | 83 | M16×1.5 | 15 |
| 63 | 15 | 38 | 16 | 33 | 64 | 83 | M16×1.5 | 15 |
| 80 | 18 | 46 | 20 | 40 | 77 | 100 | M20×1.5 | 15 |
| 100 | 18 | 46 | 20 | 40 | 77 | 100 | M20×1.5 | 15 |
| 125 | 37 | 70 | 30 | 51 | 110 | 145 | M27×2.0 | 15 |
| 160 | 43 | 80 | 35 | 56 | 125 | 165 | M36×2.0 | 16 |
| 200 | 43 | 80 | 35 | 56 | 125 | 165 | M36×2.0 | 16 |