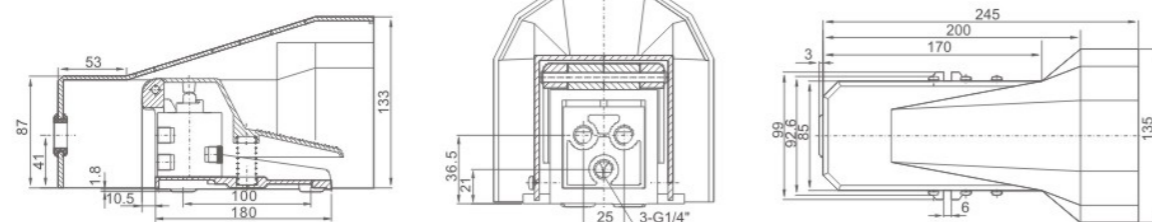
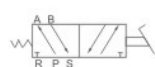


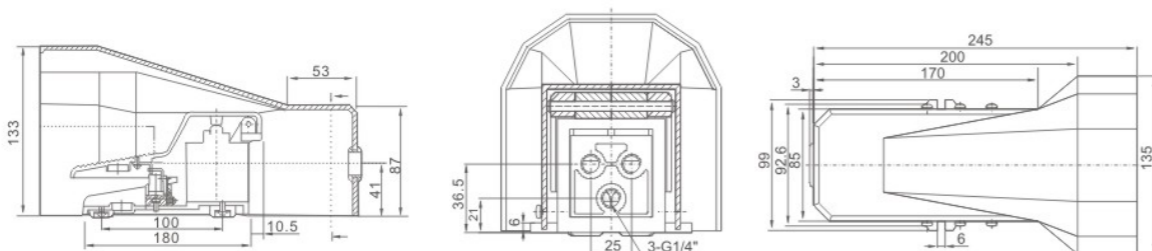
### 4F、FV Series Foot Valve

Overall Dimensions

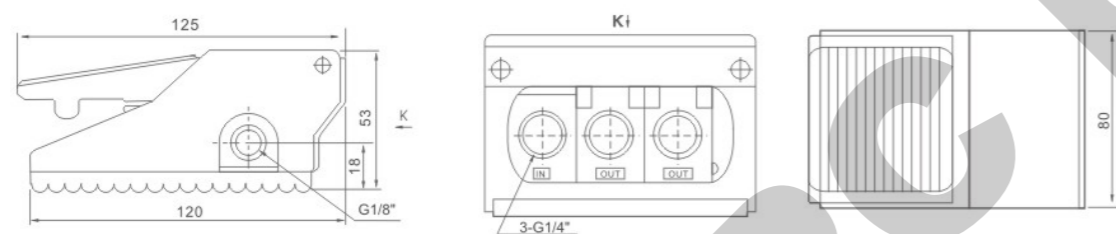
4F210-08G



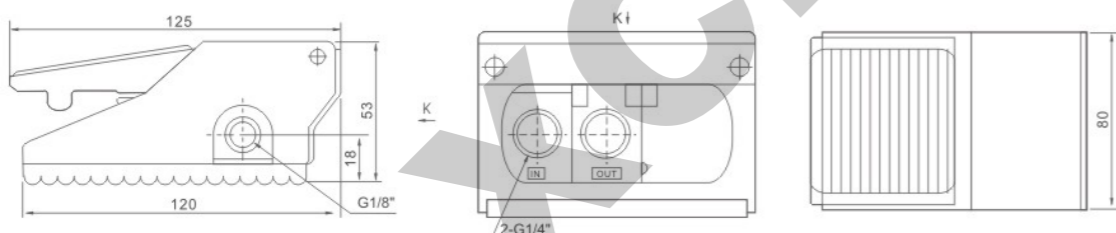
4F210-08LG



FV420



FV320



### RE Series Flow Control Valve



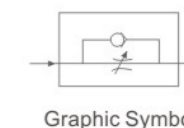
Ordering Code

RE

Series Code  
RE: Ordinary Type  
Flow Control Valve

01

Port Size  
01: G1/8"  
02: G1/4"  
03: G3/8"  
04: G1/2"



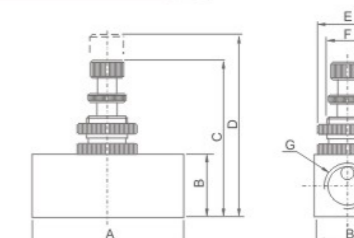
Specification

Model	RE-01	RE-02	RE-03	RE-04
Port Size	G1/8"	G1/4"	G3/8"	G1/2"
Working Medium	Air			
Working-pressure Range	0~0.95MPa			
Operating Temperature Range	0~60°C			

Dimension Sheet

Model	A	B	C	D	E	F	G
RE-01	45	19	43	50	φ19	M14×1	G1/8
RE-02	45	19	43	50	φ19	M14×1	G1/4
RE-03	55	25	55	62	φ25	M18×1	G3/8
RE-04	55	25	55	62	φ25	M18×1	G1/2

Overall Dimensions



### ASC Series Check Valve



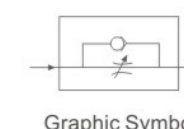
Ordering Code

ASC

Series Code  
ASC: Accurate Type  
Flow Control Valve

08

Port Size  
06: G1/8"  
08: G1/4"  
10: G3/8"  
15: G1/2"



Specification

Model	ASC-06	ASC-08	ASC-10	ASC-15
Port Size	G1/8"	G1/4"	G3/8"	G1/2"
Working Medium	Air			
Working-pressure Range	0~0.95MPa			
Operating Temperature Range	0~60°C			

Dimension Sheet

Model	A	B	C	D	E	F	G	H	I	J	K	L
ASC-06	22	32	G1/8	22	27	4.3	49.7	56.5	M6×0.5	M12×0.75	12	18
ASC-08	26	36	G1/4	22	27	4.3	49.7	56.5	M6×0.5	M12×0.75	12	18
ASC-10	28	40	G3/8	25	30	4.3	52.7	59.5	M6×0.5	M12×0.75	13	22
ASC-15	28	40	G1/2	30	35	4.3	58.7	65.5	M6×0.5	M12×0.75	13.5	26

Overall Dimensions

