

### HLP Series Pressure Controller



#### Descriptions

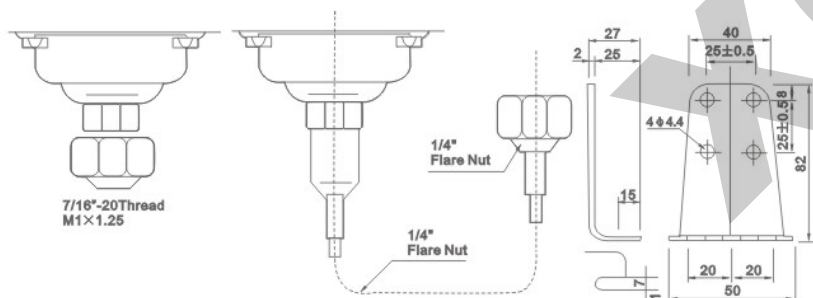
For use with fluorinated refrigerants as well as with a air and water.  
(Allowable Fluid Temp.: -10°C~+110°C)  
Various contact functions available,  
With SPDT contact mechanism,  
Renovated micro-switch stucture ensures the reliable switch function,  
Manual-controlled and no use of other instruments to have a function test,  
Flexible mounting plate suits various kinds of application.  
Our products can substitute for congeneric import products, such as JOHNSON, DANFOSS, SAGINOMIYA, 3S, RANCO and so on

#### Specification

Model	Range(bar)		Differential(bar)		Factory Setting(bar)		Max. Bellows Press(bar)
	Min.	Max.	Min.	Max.	OFF	ON	
HLP503	-0.7	3	0.2	1.5	2	1	16.5
HLP506	-0.7	6	0.6	4	3	2	16.5
HLP506M	-0.7	6	Duplicate voltage disparity≤1		3	Manual Reset	16.5
HLP110	1	10	1	3	6	5	16.5
HLP516	5	16	1	4	10	8	35
HLP520	5	24	2	5	16	13	35
HLP530D	5	30	5	10	20	15	35
HLP530	8	30	Fixed3-5		20	15-17	35
HLP530M	8	30	Duplicate voltage disparity≤4		20	Manual Reset	35

Model	Press Side	Range(bar)		Differential(bar)		Factory Setting(bar)		Max. Bellows Press(bar)
		Min.	Max.	Min.	Max.	OFF	ON	
HLP830	Low Side	-0.7	6	0.6	4	3	2	16.5
	High Side	8	30	Fixed 3~5		2	15	35
	Low Side	-0.7	6	0.6	4	3	2	16.5
HLP830HM	High Side	8	30	Duplicate voltage disparity≤4		20	Manual Reset	35
	Low Side	-0.7	6	Duplicate voltage disparity≤4		3	Manual Reset	16.5
HLP830HLM	High Side	8	30	Duplicate voltage disparity≤4		20	Manual Reset	35

#### Way of Connection



#### Slight Moving Swith's Date

Specified Voltage(V)	Specified Electric Current(A)	
	A.C. 125	A.C. 125
Non-Inductive Current	48	12
Maximum Load	48	12
Twinking Electric Current	228	72

### XGT Series Pneumatic Gear Vibrator



#### Feature

**Product Features**  
Vibration intensity can be adjusted based on air pressure,can immediately start,stop,fast,low-noise,vibration force,security.

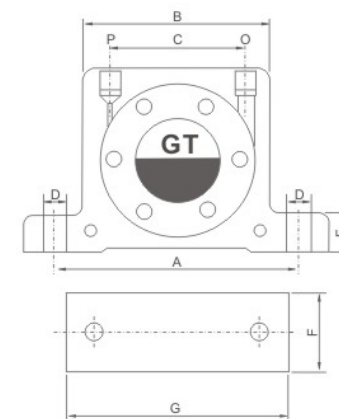
**Application**  
Feed material conveyor,vibrating screening,vibrating hopper,to help fill packgng,foundry sand mold vibration.

**Works**  
Copper eccentric gear installed counterweight impact ai intake charge into the gear thrust gear rotates,the eccentric rotation of the centrifugal weight with vibration,the gear driven by a bearing,low noise.

#### Specification

Model	Frequency(V.P.M)			Vibration power(N)			Air consumption(/min)		
	0.2Mpa	0.4Mpa	0.6Mpa	0.2Mpa	0.4Mpa	0.6Mpa	0.2Mpa	0.4Mpa	0.6Mpa
XGT-8	34.850	42.000	45.500	980	2.100	2.800	46	80	112
XGT-10	27.500	35.000	37.500	840	1.390	2.400	46	80	112
XGT-13	26.000	30.000	33.000	1.400	2.440	3.730	120	200	290
XGT-16	17.000	21.500	24.000	1.220	2.090	3.160	120	200	290
XGT-20	17.000	20.000	23.000	2.170	4.040	5.520	185	325	455
XGT-25	12.000	15.500	17.000	2.120	3.510	5.070	185	325	455
XGT-32	13.000	14.000	16.000	3.380	5.430	7.540	330	530	745
XGT-36	7.800	10.000	13.000	3.300	5.000	7.150	330	530	745
XGT-40	7.500	8.800	9.500	4.350	7.350	9.850	408	428	680
XGT-48	5.800	7.500	9.700	4.950	7.750	10.6007	408	428	680
XGT-60	4.758	6.530	8.515	5.700	9.800	11.150	505	600	920

#### Overall Dimensions



#### Dimension Sheet

Model	A	B	C	D	E	F	G	P/O
XGT-8	68	50	28	7	12	35	86	1/8
XGT-10	68	50	28	7	12	35	86	1/8
XGT-13	90	65	39	9	16	43	113	1/4
XGT-16	90	65	39	9	16	43	113	1/4
XGT-20	104	82	56	9	17	56	128	1/4
XGT-25	104	82	56	9	17	56	128	1/4
XGT-32	130	103	76	11	21	73	160	3/8
XGT-36	130	103	76	11	21	73	160	3/8
XGT-40	152	122	85	18	27	80	194	3/8
XGT-48	152	122	85	18	27	80	194	3/8
XGT-60	195	140	96	21	30	95	240	1/2