

XHF Series Low Profile Air Gripper(Parallel Type)



XHF2-20D

Ordering Code

XHF **2** — **12** **D** □ □
Series Code XHF: Parallel Type Low profile Air Gripper
Finger Quantity 2: 2PCS
Cylinder Bore 8mm~20mm
Action D: Double-acting
Stroke Blank: Short Stroke
1: Middle Stroke
2: Long Stroke
Body Type Blank: Axial Porting Type
R: Side Porting Type

Specification

Bore(mm)	8	12	16	20
Working Medium	Air(No Lubrication)			
Operating Pressure Range(Mpa)	0.15~0.7		0.1~0.7	
Ambient And Fluid	-10~+60°C (Not freezing)			
Repeatability Precision(mm)	±0.05*			
Max.motion Frequency (c.p.m)	Short stroke,Middle stroke:120 Long stroke:60			
Motion Pattern	Double acting			
Each Gripper Effective Grip Power	19	48	90	141
Open Close Stroke (Both Side)	8,16,32	12,24,48	16,32,64	20,40,80

- ① If gripper have unbalance loading,for the gear distance,the max,is ±0.15mm
- ② When plessure is 0.5 mpa,grip power distance is 20mm

XHS2 Series Slide Guide Air Gripper(Round Body)

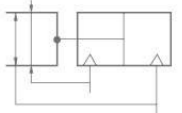


XHS2-32D

Ordering Code

XHS **2** — **32** **D**
Series Code XHS: Round Body Type
Finger Quantity 2: 2PCS
Cylinder Bore 16mm~63mm
Action D: Double-acting

Graphic Symbol



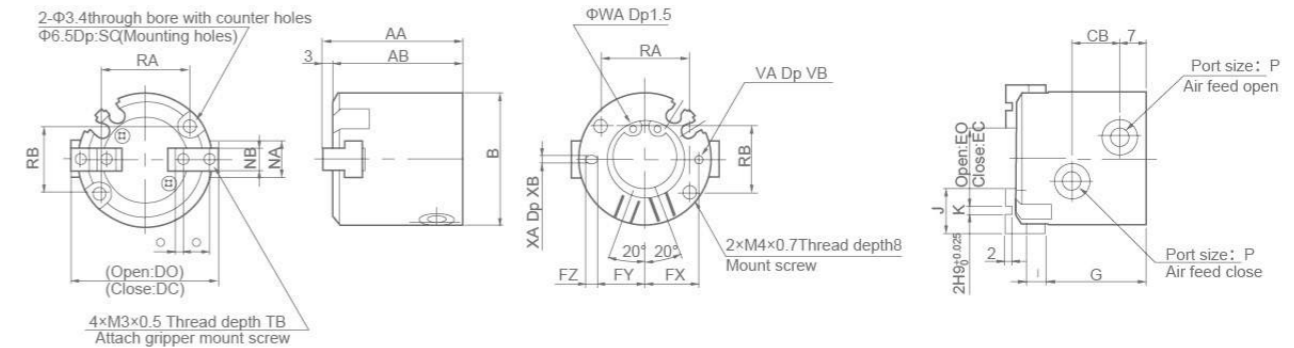
Specification

Bore(mm)	16	20	25	32	40	50	63	
Working Medium	Air							
Operating Pressure Range	0.2~0.6MPa			0.1~0.6MPa				
Ambient And Fluid	-10~+60°C							
Repeatability Precision	±0.01mm							
Max.motion Frequency	120c.p.m.			60 c.p.m.				
Lubrication	Not required							
Motion Pattern	Double acting							
Note:Grip power pressure 0.5Mpa	Outer diameter grip	21	37	63	111	177	280	502
	Inner diameter grip	23	42	71	123	195	306	537
Gripper Stroke	4	4	6	8	8	12	16	
Port Size	M3×0.5			M5×0.8				
Magnetism Switch	With magnet							

- ① Grip outer diameter power,Φ16-Φ25 grip distance L=30mm

Overall Dimensions

XHS2~16D



Dimension Sheet

Bore(mm)	AA	AB	B	CB	DC	DO	EC	EO	FX	FY	FZ	G	I	J	K	NA	NB	O	P	Q
16	35	32	30	11	30	34	10	14	12.5	11	3	25	4	10	4	8	5h9 ⁰ _{-0.030}	2	M3x0.5	6
20	38	35	25	13	36	40	12	16	14.5	13	3	27	5	12	5	10	6h9 ⁰ _{-0.030}	2.5	M5x0.8	7
25	40	37	42	15	42	48	14	20	17	14.5	5	28	5	14	6	12	6h9 ⁰ _{-0.030}	3	M5x0.8	8

Bore(mm)	RA	RB	SC	TB	VA	VB	WA	XA	XB
16	18	16	8	5	2H9 ^{+0.025} ₀	2	17H9 ^{+0.043} ₀	2H9 ^{+0.025} ₀	2
20	24	18	9.5	6	2H9 ^{+0.025} ₀	2	21H9 ^{+0.052} ₀	2H9 ^{+0.025} ₀	2
25	26	22	10	6	3H9 ^{+0.025} ₀	3	3H9 ^{+0.052} ₀	3H9 ^{+0.025} ₀	3

XHW Series Angular Air Grippers (Rack & Pinion Type)



XHW2-32D

Ordering Code

XHW **2** — **20** **D** □
Series Code XHW: Rack&Pinion Type Air Angular Gripper
Finger Quantity 2: 2PCS
Cylinder Bore 20mm~50mm
Action D: Double-acting
Finger Type Blank: Flat Type (Standard)
1: Right Angle Type (Tapped Mounting)

Specification

Bore(mm)	20	25	32	40	50
Working Medium	Air				
Motion Pattern	Double acting				
Max.operating Pressure Range(Mpa)	0.7				
Min.operating Pressure Range(Mpa)	0.15				
Ambient And Fluid	-10~+60°C (Not freezing)				
Max.motion Frequency	60c.p.m		30c.p.m		
Repeatability Precision	±0.2mm				
Note1) Grip Moment	0.30	0.73	1.61	3.70	8.27
Note2) Lubrication	Not required				
Port Size	M5×0.8		Rc ¹ / ₈		Rc ¹ / ₄

- Note 1) At 0.5MPa pressure ambient
- Note 2) If need lubrication please use ISOVG32