

### CY3L Series Rodless Cylinder



CY3L 15x200

Ordering Code

**CY3L** **20** — **H** × **50** **BS**

**Series code**  
CY3L: Sliding Type  
Ball Guide Bearing  
Type

**Bore Size**  
15mm~40mm

**Manget Holding Foece Type**  
H: High  
L: Lower(Φ6-Φ10.No.L)

**Stroke**  
See Stroke List

**Stopper Form**  
No mark: With adjusting screw  
B: 2 hydraulic shock absorbers  
BS: 1 pcs hydraulic shock absorber

#### Specification

Bore(mm)	6	10	15	20	25	32	40
Working Medium	Air(to be filtered by 40μm filter element)						
Action Type	Double-acting						
Max.operating Pressure	0.7MPa						
Min.operating Pressure	0.18MPa						
Environment and Fluid Temperature	-10~60°C (No freezing)						
Piston Speed	50~1000mm/s						
Cushion Type	Rubber cushion on both ends Shock absorber(Optional)						
Stroke Tolerance(mm)	0~250 <sup>+1.0</sup> , 251~1000 <sup>+1.4</sup> , 1001~1500 <sup>+1.8</sup>						
Lubrication	Not required (Non-lube)						
Port Size	M5x0.8			Rc1/8		Rc1/4	
Mounting Method	Unlimited						

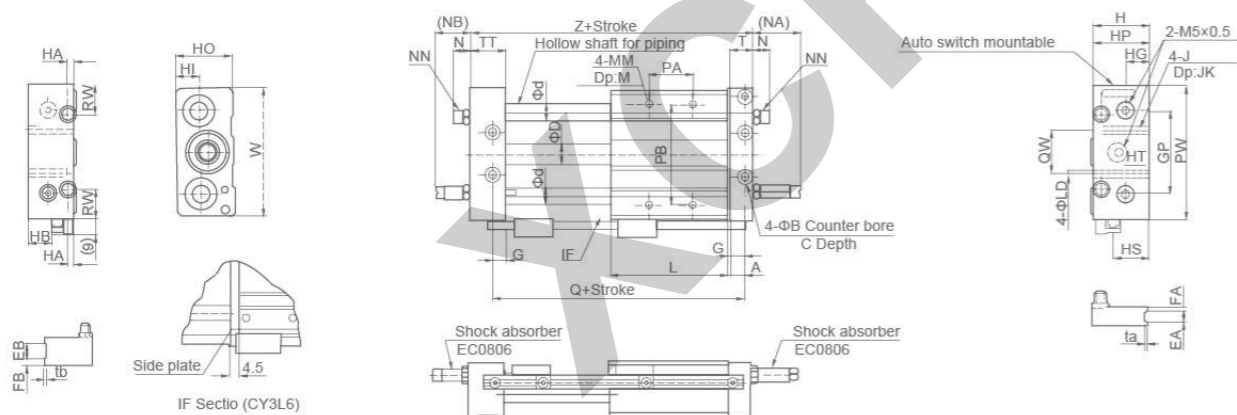
Such as the need for oil, please use turbine No.1 oil ISO VG32.

#### Stroke

Bore(mm)	Standard stroke(mm)	Longest stroke(mm)
6	50, 100, 150, 200	300
10	50, 100, 150, 200, 250, 300	500
15	50, 100, 150, 200, 250, 300, 350, 400, 450, 500	750
20		1000
25	50, 100, 150, 200, 250, 300, 350, 400, 450, 500, 600, 700, 800	
32		1500
40	50, 100, 150, 200, 250, 300, 350, 400, 450, 500, 600, 700, 800, 900, 1000	

#### Overall Dimensions

CY3L 6~10



### CY3L Series Rodless Cylinder

#### Dimension Sheet

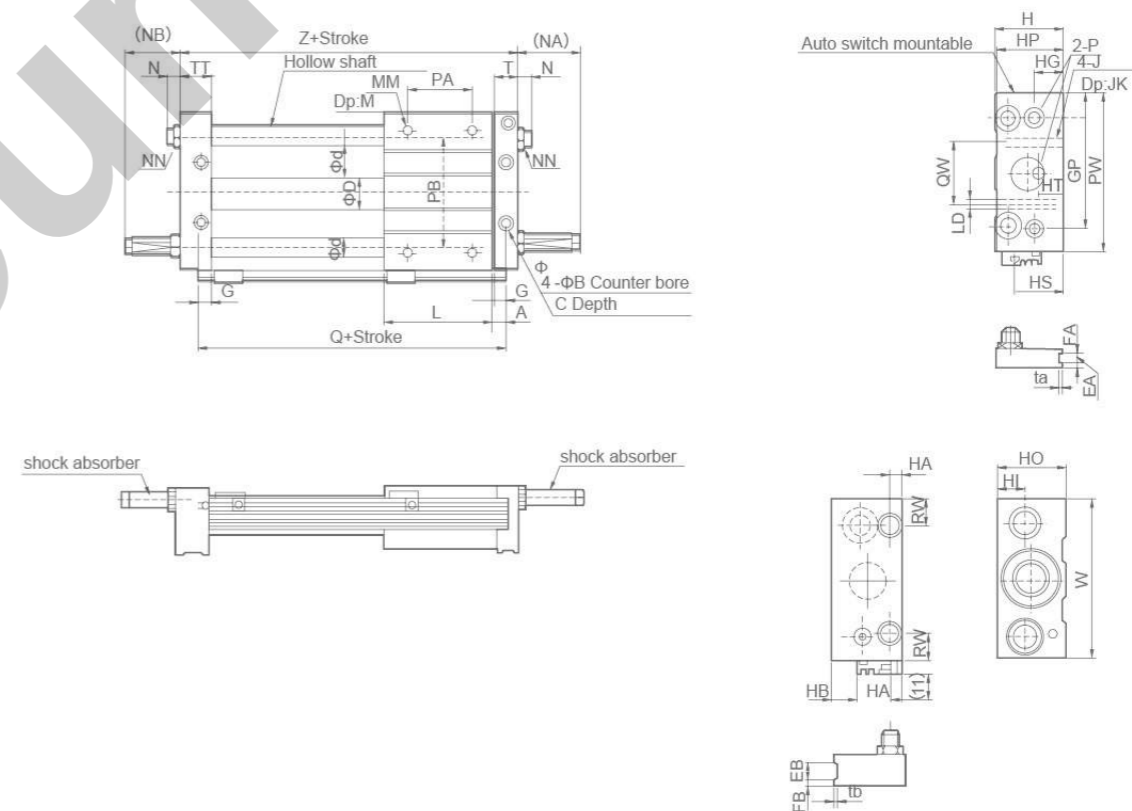
Bore(mm)	Travel range	A	B	C	D	d	EA	EB	FA	FB	G	GP	H	HA	HB	HG	HI	HO	HP	HS	HT
6	~300	7	6.5	3	7.6	8	-	-	-	-	6	36	27	6	10	11	9	25	26	14	16
10	~300	8.5	8	4	12	10	6	12	3	5	7.5	50	34	6	17.5	14.5	13.5	33	33	21.5	18

Bore(mm)	J	JK	L	D	M	MM	N	(NA)	(NB)	NN	*PA	PB	PW	Q	QW	RW	T	TT	ta	tb	W	Z
6	M4x0.7	6.5	40	3.5	6	M4x0.7	10	30	24	M8x1.0	24	40	60	54	20	12	10	16	-	-	56	68
10	M5x0.8	9.5	68	4.3	8	M4x0.7	9.5	27	19	M8x1.0	30	60	80	85	26	17.5	12.5	20.5	0.5	1.0	77	103

Note: Equle about center for PA and L.

#### Overall Dimensions

CY3L15~40



#### Dimension Sheet

Bore(mm)	Travel range	A	B	C	D	d	EA	EB	FA	FB	G	GP	H	HA	HB	HG	HI	HO	HP	HS	HT	J	JK	L	LD
15	~750	7.5	9.5	5	16.6	12	6	13	3	6	6.5	65	40	6.5	4	16	14	38	39	25	16	M6x1.0	9.5	75	5.6
20	~1500	9.5	9.5	5.2	21.6	16	-	-	-	-	8.5	80	46	9	10	18	16	44	45	31	20	M6x1.0	10	86	5.6
25	~1500	9.5	11	6.5	26.4	16	8	14	4	7	8.5	90	54	9	18	23	21	52	53	39	20	M8x1.25	10	86	7
32	~1500	10.5	14	8	33.6	20	8	16	5	7	9.5	110	66	12	26.5	26.5	24.5	64	64	47.5	25	M10x1.5	15	100	9.2
40	~1500	11.5	14	8/	41.6	25	10	20	5	10	10.5	130	78	12	35	30.5	28.5	76	74	56	30	M10x1.5	15	136	9.2

Bore(mm)	M	MM	(N)	(NA)	(NB)	NN	P	*PA	PB	PW	Q	QW	RW	T	ta	tb	TT	W	Z	Shock absorber
15	8	M5x0.8	7.5	27	17	M8x1.0	M5x0.8	45	70	95	90	30	15	12.5	0.5	1.0	22.5	92	112	HAC0806
20	10	M6x1.0	10	29	20	M10x1.0	1/8	50	90	120	105	40	28	16.5	-	-	25.5	117	130	HAC1005
25	10	M6x1.0	11	49	40	M14x1.5	1/8	60	100	130	105	50	22	16.5	0.5	1.0	25.5	127	130	HAC1412
32	12	M8x1.25	11.5	52	42	M20x1.5	1/8	70	120	160	121	60	33	18.5	0.5	1.0	28.5	157	149	HAC2020
40	12	M8x1.25	10.5	51	36	M20x1.5	1/4	90	140	190	159	84	35	20.5	1.0	1.0	35.5	187	194	HAC2020

Note: Equle about center for PA and L.