

SK Series Foot Valve



SK25R7-08

Ordering Code

SK **23** **R₇** **L8**

Series Code SK
Foot Valve

Position and Way Number 23: Two-position Three-way
25: Two-position Five-way

Type Code R₇:Foot Type

Port Size L6: G1/8"
L8:G1/4"

Specification

Model	SK23R ₇ -L6	SK25R ₇ -LB
Diameter	6mm	8mm
Working Medium	Compress Air	
Working Pressure:	0.05~0.8MPa	
Medium Temperature:	-10~55°C	
Environment Temperature:	-5~50°C	
Effective Sectional Area	10mm ²	20mm ²
Letting Out Amount	≤50 cm ³ /min	
Operating Power	≤80N	≤100N
Life(ten thousand)	≥200	

SH Series Manual Valve



SH-402

Ordering Code

SH **402** **S**

Series Code SH
Foot Valve

Port Size 402: G1/4"
403: G3/8"

Type Code Blank:Immobility Type
S:Spring Reset Type

Specification

Model	SH-402	SH-402S	SH-403	SH-403S
Working Medium	Air			
Working-pressure Range	0.15~0.9MPa			
Working-temperature Range	0~70°C			
Port Size	G1/4"		G3/8"	
Position Number	Two-position Five-way			

ST Series Foot Valve



ST-402

Ordering Code

ST **402** **S**

Series Code ST
Foot Valve

Port Size 402: G1/4"
403: G3/8"

Type Code Blank:Immobility Type
S:Spring Reset Type

Specification

Model	ST-402	ST-402S	ST-403	ST-403S
Working Medium	Air			
Working-pressure Range	0.15~0.9MPa			
Working-temperature Range	0~70°C			
Port Size	G1/4"		G3/8"	
Position Number	Two-position Five-way			

RE Series Flow Control Valve



RE-02

Ordering Code

RE **01**

Series Code RE
RE:Ordinary Type
Flow Control Valve

Port Size 01:G1/8"
02:G1/4"
03:G3/8"
04:G1/2"

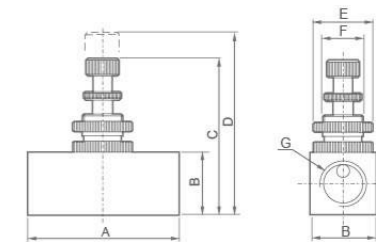


Graphic Symbol

Specification

Model	RE-01	RE-02	RE-03	RE-04
Port Size	G1/8"	G1/4"	G3/8"	G1/2"
Working Medium	Air			
Working-pressure Range	0~0.95MPa			
Operating Temperature Range	0~60°C			

Overall Dimensions



Dimension Sheet

Model	A	B	C	D	E	F	G
RE-01	45	19	43	50	Φ19	M14×1	G1/8
RE-02	45	19	43	50	Φ19	M14×1	G1/4
RE-03	55	25	55	62	Φ25	M18×1	G3/8
RE-04	55	25	55	62	Φ25	M18×1	G1/2

ASC Series Check Valve



ASC-06

Ordering Code

ASC **08**

Series Code ASC
ASC:Accurate Type
Flow Control Valve

Port Size 06:G1/8"
08:G1/4"
10:G3/8"
15:G1/2"

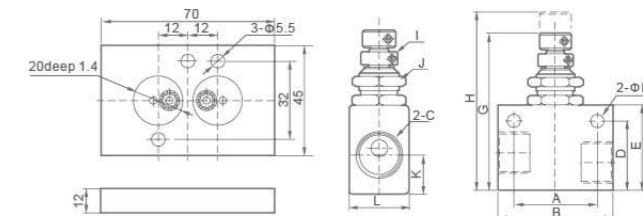


Graphic Symbol

Specification

Model	ASC-06	ASC-08	ASC-10	ASC-15
Port Size	G1/8"	G1/4"	G3/8"	G1/2"
Working Medium	Air			
Working-pressure Range	0~0.95MPa			
Operating Temperature Range	0~60°C			

Overall Dimensions



Dimension Sheet

Model	A	B	C	D	E	F	G	H	I	J	K	L
ASC-06	22	32	G1/8	22	27	4.3	49.7	56.5	M6×0.5	M12×0.75	12	18
ASC-08	26	36	G1/4	22	27	4.3	49.7	56.5	M6×0.5	M12×0.75	12	18
ASC-10	28	40	G3/8	25	30	4.3	52.7	59.5	M6×0.5	M12×0.75	13	22
ASC-15	28	40	G1/2	30	35	4.3	58.7	65.5	M6×0.5	M12×0.75	13.5	26